

NFV

Fan Nozzle with Integral Strainer Option

DESIGN FEATURES

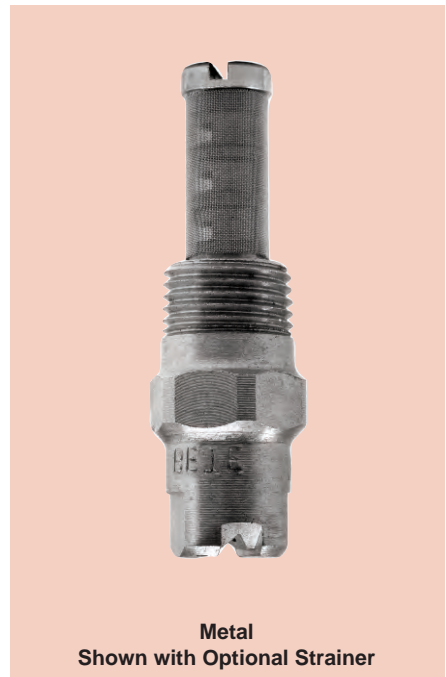
- One-piece construction
- No internal parts
- Male connection
- Low nozzle maintenance
- Optional removable strainer for easy cleaning

Connections: Male NPT and BSP

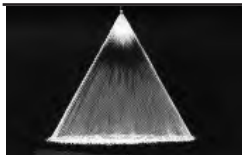
Optional Strainer: 50, 100, 200 mesh

SPRAY CHARACTERISTICS

- High impact
 - Uniform distribution
- Spray pattern:** Flat Fan and Straight Jet
Spray angles: 0°, 15°, 25°, 40°, 50°, 65°, 80°, 95°, 110°
NFV0067: Max. spray angle available 95°
Flow rates: 0.041 to 12.6 gpm



Metal
Shown with Optional Strainer

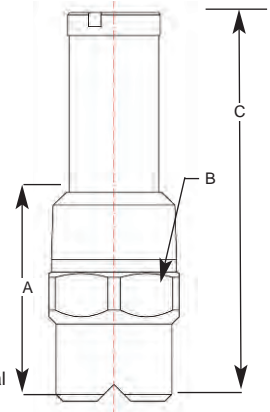


Fan 50°

Call BETE to verify spray angle performance at operating pressures above 70 psi.

NFV Dimensions

Pipe Size	Dimensions (in.)			Wt. (oz.)
	A	B	C	
1/8	0.88	0.44	1.49	1.00
1/4	1.06	0.56	1.69	1.50



To Order: Spray Set-up Number

1/4 NFV 0067 95 -L -B 303

pipe size | series | nozzle number | spray angle | optional strainer, also specify mesh size | specify material | BSP thread

NFV Flow Rates

Fan and Straight Jet, 0°, 15°, 25°, 40°, 50°, 65°, 80°, 95° (all sizes); 110° (NFV01 and higher)

Male Pipe Size	Nozzle Number	K Factor	GALLONS PER MINUTE @ PSI										Equiv. Orifice Dia. (in.)	Screen Mesh Selection Guide
			15 PSI	20 PSI	30 PSI	40 PSI	60 PSI	80 PSI	100 PSI	150 PSI	200 PSI	400 PSI		
1/8" or 1/4"	NFV0067**	0.0106	0.041	0.047	0.057	0.067	0.082	0.095	0.110	0.130	0.150	0.210	0.023	100
	NFV01	0.0158	0.06	0.07	0.09	0.10	0.12	0.14	0.16	0.19	0.22	0.32	0.026	100
	NFV015	0.0237	0.09	0.11	0.13	0.15	0.18	0.21	0.24	0.29	0.34	0.47	0.031	100
	NFV02	0.0316	0.12	0.14	0.17	0.20	0.25	0.28	0.32	0.39	0.45	0.63	0.036	100
	NFV025	0.0395	0.15	0.18	0.22	0.25	0.31	0.35	0.40	0.48	0.56	0.79	0.040	50
	NFV03	0.0474	0.18	0.21	0.26	0.30	0.37	0.42	0.47	0.58	0.67	0.95	0.043	50
	NFV04	0.0632	0.25	0.28	0.35	0.40	0.49	0.57	0.63	0.78	0.89	1.25	0.052	50
	NFV05	0.0791	0.31	0.35	0.43	0.50	0.61	0.71	0.79	0.97	1.12	1.58	0.057	50
	NFV06	0.0949	0.37	0.42	0.52	0.60	0.74	0.85	0.95	1.16	1.34	1.90	0.062	50
	NFV07	0.111	0.43	0.50	0.61	0.70	0.86	0.99	1.11	1.36	1.57	2.22	0.082	50
	NFV08	0.126	0.49	0.57	0.69	0.80	0.98	1.13	1.26	1.55	1.79	2.53	0.072	50
	NFV10	0.158	0.61	0.71	0.87	1.00	1.22	1.41	1.58	1.94	2.24	3.16	0.080	50
	NFV15	0.237	0.92	1.06	1.30	1.50	1.84	2.12	2.37	2.90	3.35	4.74	0.094	50
	NFV20	0.316	1.22	1.41	1.73	2.00	2.45	2.83	3.16	3.87	4.47	6.32	0.109	50
	NFV30	0.474	1.84	2.12	2.60	3.00	3.67	4.24	4.74	5.81	6.71	9.49	0.141	50
	NFV40	0.632	2.45	2.45	3.46	4.00	4.90	5.66	6.32	7.75	8.94	12.60	0.156	50

**NFV0067: Max. spray angle available: 95°

Flow Rate (GPM) = $K \sqrt{\text{PSI}}$ Standard Materials: Brass and 303 Stainless Steel. Highlighted NFVs available in 316 Stainless Steel.

Spray angle performance varies with pressure. Contact BETE for specific data on critical applications.

TO ORDER: specify pipe size, connection type, nozzle number, spray angle, and material.