

NCFL

Flange Connection/Plastic Material

DESIGN FEATURES

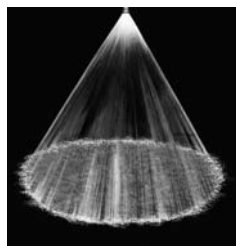
- Large internal passages
- Uniform spray coverage
- High flow rates with coarse atomization
- Variety of polymer materials available, offering high corrosion resistance
- For metal alloy nozzles refer to SC (pp. 32, 33) and TC (p. 39).

SPRAY CHARACTERISTICS

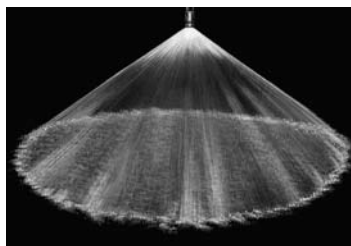
Spray pattern: Full Cone
Spray angles: 60°, 90°, and 120°
Flow rates: 94 to 4360 gpm
 (Special flow rates available)



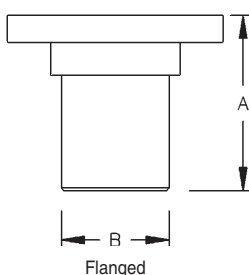
Plastic Flanged



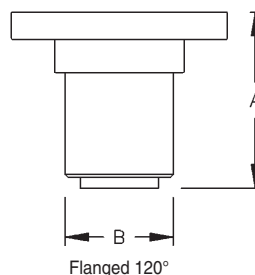
Full Cone 60° (N)



Full Cone 120° (W)



Flanged



Flanged 120°

Dimensions are approximate. Check with BETE for critical dimension applications.

NCFL Flow Rates and Dimensions

Full Cone, Narrow 60° (N), Medium 90° (M) and Wide 120° (W) Spray Angles, Flanged Connection*

Pipe Size	Nozzle Number	K Factor	GALLONS PER MINUTE @ PSI							Approx. Free Pass.		Dim. (in.)		Wt. PVC (lbs.)
			3 PSI	5 PSI	7 PSI	10 PSI	12 PSI	15 PSI	20 PSI	Approx. Orifice Dia. (in.)	Pass. Dia. (in.)	A	B	
4	NCFL40140	56.1	94.0	120	140	166	180	200	229	1.48	1.00	6.30	4.50	8.0
	NCFL40180	72.1	121	154	180	213	232	258	295	1.69	1.31			
	NCFL40250	100	168	213	250	296	322	358	409	1.98	1.58			
6	NCFL60350	140	235	299	350	414	451	501	573	2.38	1.70	10.0	6.62	14
	NCFL60480	192	322	410	480	568	618	687	786	2.75	1.75			
	NCFL60615	246	413	525	615	727	792	880	1010	3.11	1.97			
8	NCFL80665	266	447	568	665	786	857	951	1090	3.25	2.12	12.0	8.62	26
	NCFL80775	311	520	662	775	916	998	1110	1270	3.52	2.38			
	NCFL80885	355	594	756	885	1050	1140	1270	1450	3.75	2.62			
12	NCFL1201280	513	860	1090	1280	1510	1650	1830	2100	4.50	2.88	18.0	12.7	70
	NCFL1201910	765	1280	1630	1910	2260	2460	2730	3130	5.50	3.25			
	NCFL1202665	1070	1790	2270	2665	3150	3430	3810	4360	6.25	3.50			

Flow Rate (GPM) = K (PSI)^{0.47} *150# flange standard; other options available upon request.

Standard Materials: PVC, Polypropylene, and PTFE (12" NCFL not available in PTFE).

Spray angle performance varies with pressure. Contact BETE for specific data on critical applications.

TO ORDER: specify pipe size, connection type, nozzle number, spray angle, and material.