

RETRACTABLE LANCE APPLICATION INFORMATION REQUEST FORM

All completed forms should be emailed back to: appeng@bete.com
Please fill out the following form as completely as possible to assist in the nozzle selection process.

Contact Information:

Date:	Name:
Telephone:	Company:
Fax:	Address:
Email:	Job/Reference #:

Codes:

Design Code/Registration: _____			
Vessel Design Pressure*: _____		Vessel Design Temperature*: _____	
Injector Design Pressure*: _____		Injector Design Temperature*: _____	
Corrosion Allowance: _____			
Other Specifications: _____			

*See Figure 1, Page 2

Additional Testing/QC Requirements:

All NDE Requirements of Requested Design Codes will be Performed Automatically

NDE Type	Extent of NDE and on What Components

Material Test Reports Will Be Provided	Material Origin Restrictions/AML	Yes <input type="checkbox"/> No
--	----------------------------------	---------------------------------

Spray Nozzle Selection:

What Liquid is being Sprayed: _____		Specific Gravity/Density: _____	
Viscosity: _____		Injection Fluid Flow Rate: _____	
Available Nozzle Pressure Drop: _____		Spray Pattern:	
Nozzle Spray Angle: _____		Spray Pattern Orientation*: _____	
Nozzle Connection Style:		Nozzle Model (if known): _____	

*See Figure 1

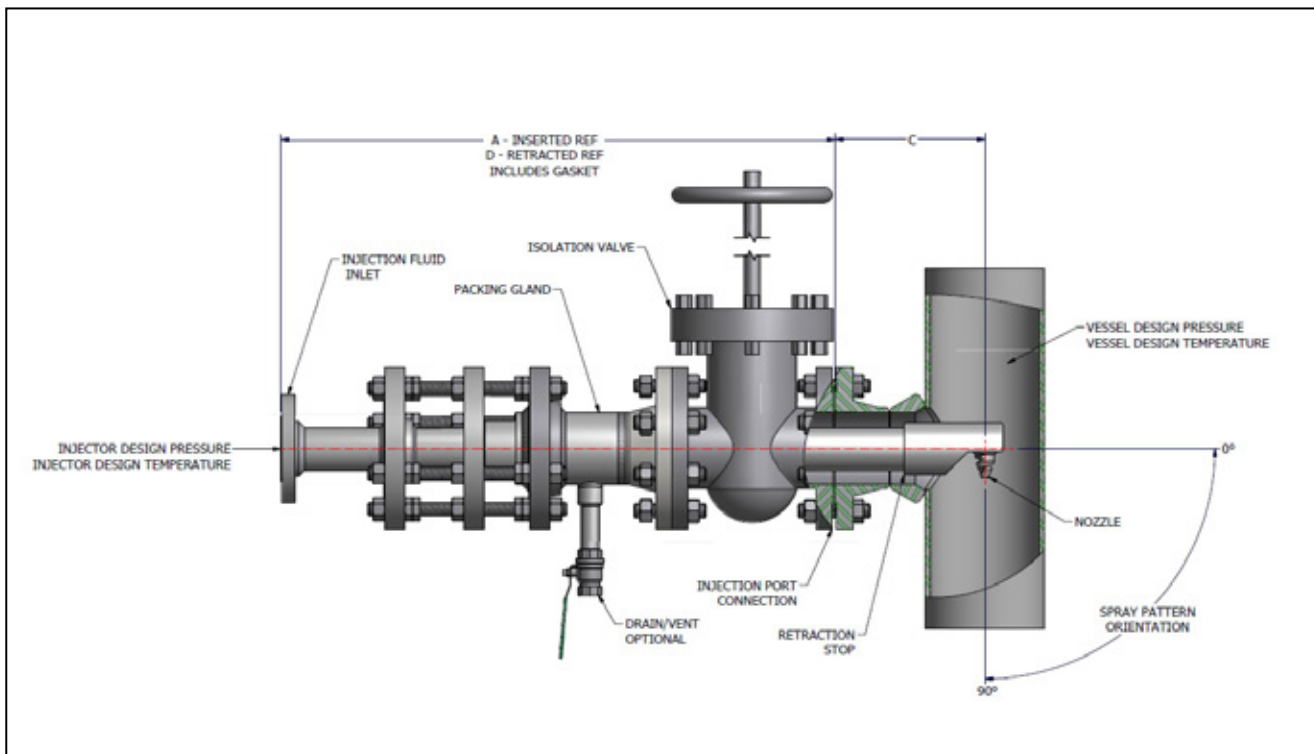


Figure 1: A Retractable Lance Inserted into a Vessel



Spray
Nozzles



Spray
Fabrications



Spray
Systems



Applications
Engineering



Spray
Research

Lance Assembly:

Required Insertion Length (Dimension C)*: _____	
Injection Port Connection Flange Size and Rating*: _____	
Injection Fluid Inlet Connection Size and Rating*: _____	
Maximum Retracted Length (Dimension D)*: _____	
Drain/Vent Valve Required to Purge Lance and Packing Gland after Valve is Closed?*	
Drain/Vent Valve Type: (please provide approved manufacturer list if applicable)	
Preferred Material of Components in Contact with Vessel Fluid:	
Preferred Material of Components in Contact with Injection Fluid:	
Preferred Material of all Other Components:	
Standard Packing Material Is Garlock Style 1303-FEP. If Other Please Specify:	
BETE to Supply Isolation Valve?*	
(please provide approved manufacturer list if applicable)	
Retraction Mechanism Required?***	

*See Figure 1, Page 2

**See Figure 2, Page 4

Comments/Other Notes:

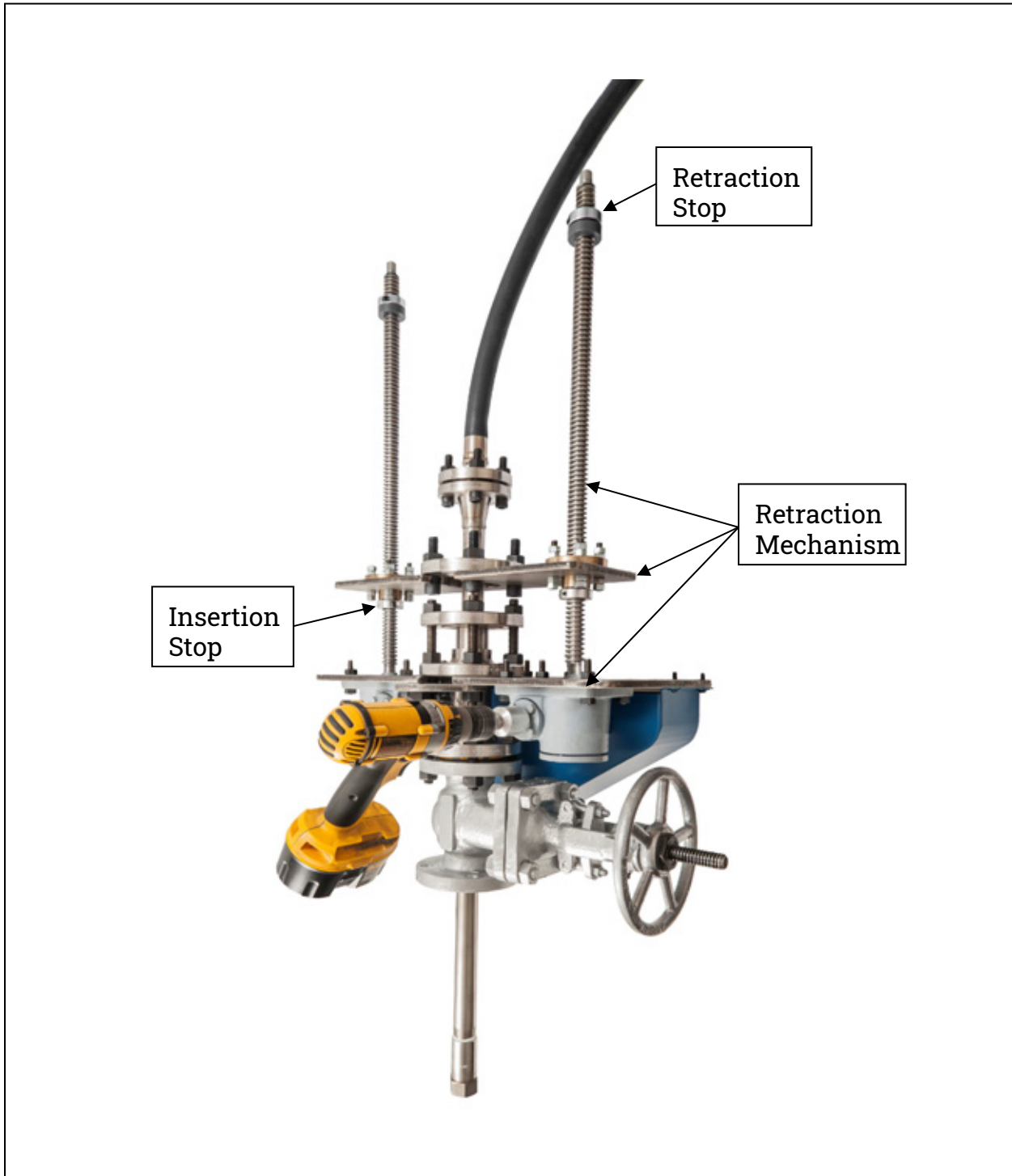


Figure 2: Retractable Lance with Optional Retraction Mechanism that can be Driven by a Cordless Drill. Drill Not Included.